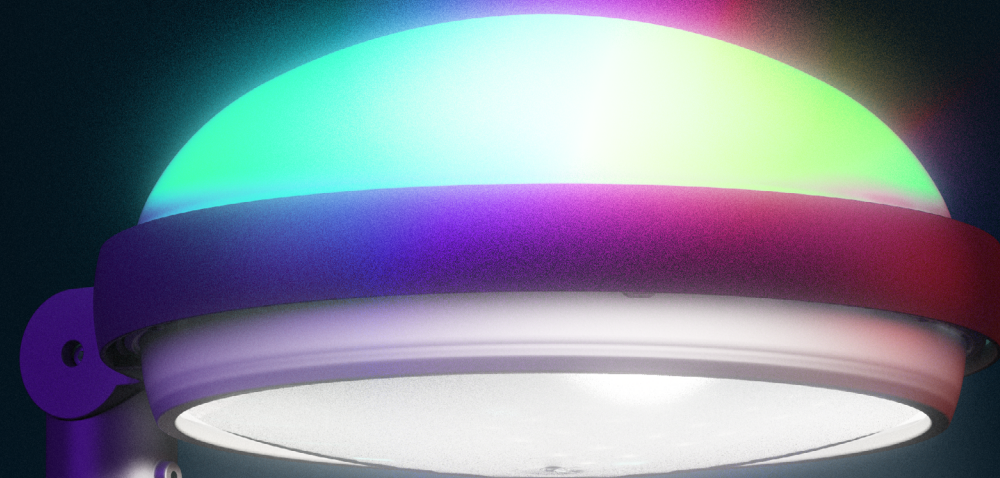




ATPiluminacion.com

Alumbrado Técnico Público S.A.  
Avenida de Irún, 33 · 31194 · Arre  
Navarra, Spain  
Tel. (+34) 948 330 712  
info@atpiluminacion.com

ref. 237051057



Metrópoli  
Color





**UNLEASH YOUR  
CREATIVITY**

**VIBRANT COLORS  
WITH BOUNDLESS POTENTIAL**



# BACKLIT DYNAMIC RGBW COVER

Remotely controlled, the RGBW backlit cover can reproduce over 250 million colors to create captivating lighting effects. The RGB system allows easy customization with multiple options, from solid colors to dynamic scenes with sequential changes.



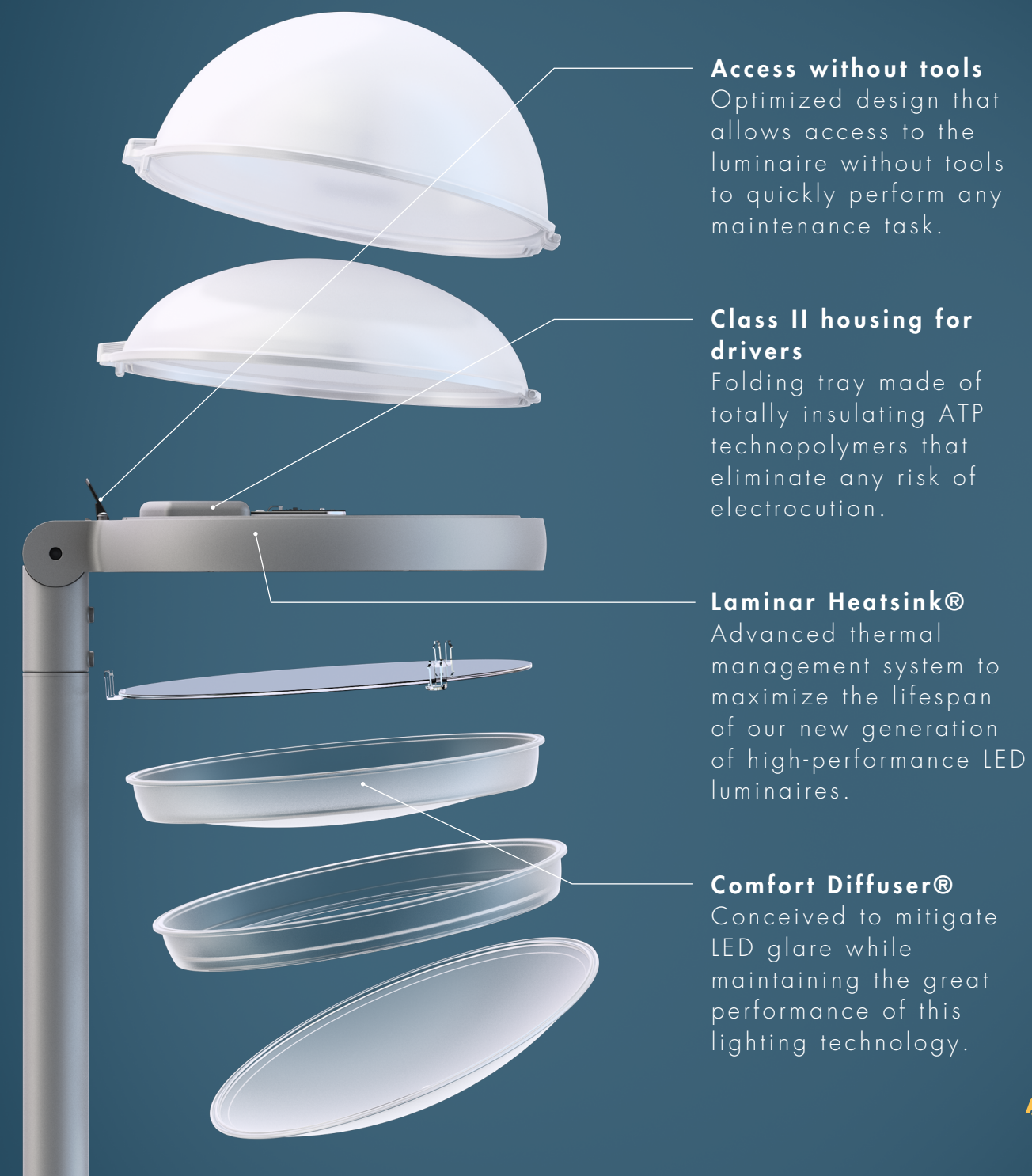
# **CAPTIVATING AMBIANCE TRANSFORMATIONS**

The ultimate ambiance transformation experience awaits with the RGBW backlit cover system. Users can easily adjust customized RGBW lighting scenes and also create enchanting light shows. From setting the perfect mood to captivating audiences with dynamic displays, this feature offers unparalleled versatility.



# ONE HI-TECH CORE, MULTIPLE CONFIGURATIONS

This luminaire is designed to achieve various appearances using the same hi-tech core. Its exterior modularity allows for combining different covers, diffusers, and ornamental rings, making the product fully customizable and increasing its adaptability to different aesthetic contexts.



## **Access without tools**

Optimized design that allows access to the luminaire without tools to quickly perform any maintenance task.

## **Class II housing for drivers**

Folding tray made of totally insulating ATP technopolymers that eliminate any risk of electrocution.

## **Laminar Heatsink®**

Advanced thermal management system to maximize the lifespan of our new generation of high-performance LED luminaires.

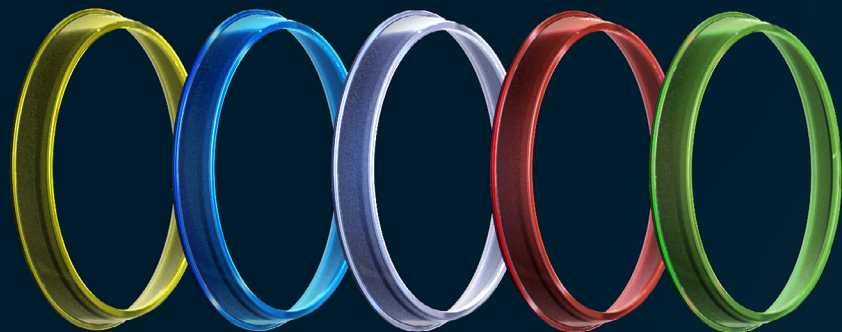
## **Comfort Diffuser®**

Conceived to mitigate LED glare while maintaining the great performance of this lighting technology.



# COLOR RINGS FOR ALLURING COMBINATIONS

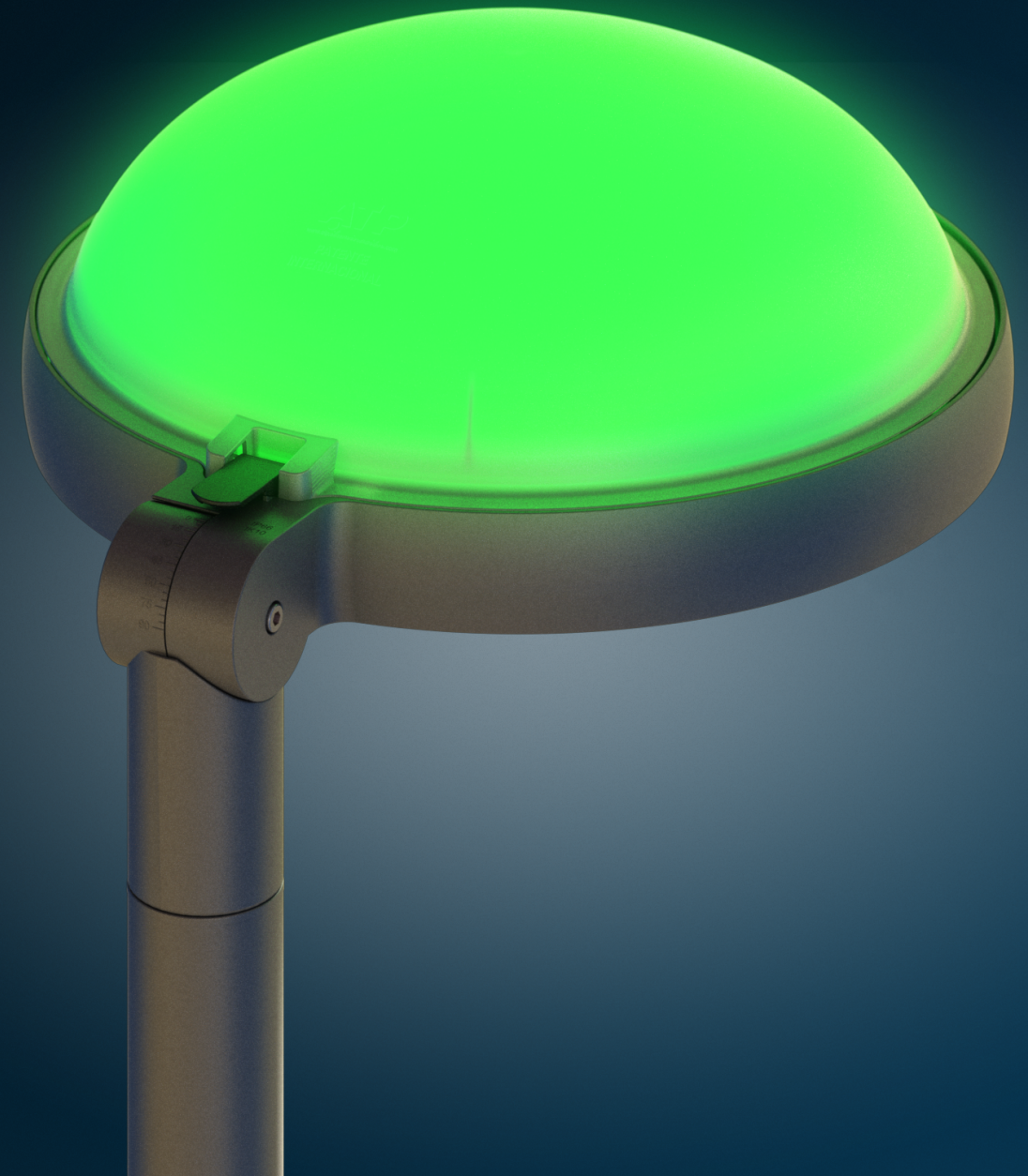
Customizable color rings are the ideal addition to the backlit cover, enabling the creation of attractive combinations. Available in blue, green, red, yellow, and white.





# ENDLESS BACKLIGHT POSSIBILITIES

The RGBW backlit cover system offers endless possibilities, from enhancing roadway safety with signals for road closures, construction precautions, or air quality, to crafting mesmerizing chromatic displays that set the mood for events and monumental areas.





# DMX CONTROL

The DMX (Digital Multiplex) protocol provides absolute versatility and immediacy, allowing for precise programming of light shows and synchronizing them with concerts, performances, audiovisual projections, and even fireworks displays. This technology enables entertainment professionals to create stunning and customized visual environments across a wide range of applications.



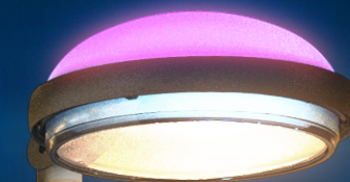
# PERFORMANCE COMPARISON

	Monocolor	Bluetooth	DMX
Backlighting	✓	✓	✓
Static backlight in blue or white	✓	✓	✓
RGBW colors (+250 million)	✗	✓	✓
Scene creation	✗	✓	✓
Calendar linking	✗	✓	✓
Wireless installation	✗	✓	✗
Wireless control	✗	✓	✓
Recommended applications	Static decorative use	Signage, ambiance creation, light shows	Synchronized lighting with outdoor events
Limit of controllable luminaires	-	250 lights per network	768 lights per controller



# SKY-FRIENDLY BACKLIGHTING

ATP has meticulously studied the backlighting of Metropolis Color taking into account light pollution control and respect for the night sky. The ULOR (upward light output ratio) values of the backlit cover are below 1, making it compatible with international sky quality certifications such as Starlight.





# STATE-OF-THE-ART POLYMERIC MATERIALS

Built with state-of-the-art polymeric materials created exclusively by ATP to offer total electrical insulation, immunity to surges, and maximum resistance to vandalism. These materials are immune to corrosion and withstand the most extreme weather conditions.



## Reinforced engineering technopolymer S7

Immune to corrosion and degradation caused by the weather. Withstands tropical storms, constant humidity, saltpeter, and even fire. Dismisses any electrocution hazard.

## High-impact transparent tropicalized thermopolymer T5

Chemical polishing to achieve exceptional transparency and transmittance. Superior lighting characteristics in comparison to glass, and 200 times more resistant.



## **ANTI-ELECTROCUTION:**

**100 % SAFE IN ANY  
CIRCUMSTANCE**

**Completely safe product manufactured with insulating polymeric materials that eliminate the danger of electric shock when touching the luminaire. Combined with our polymeric columns, the whole assembly is 100 % safe even in extremely wet environments.**

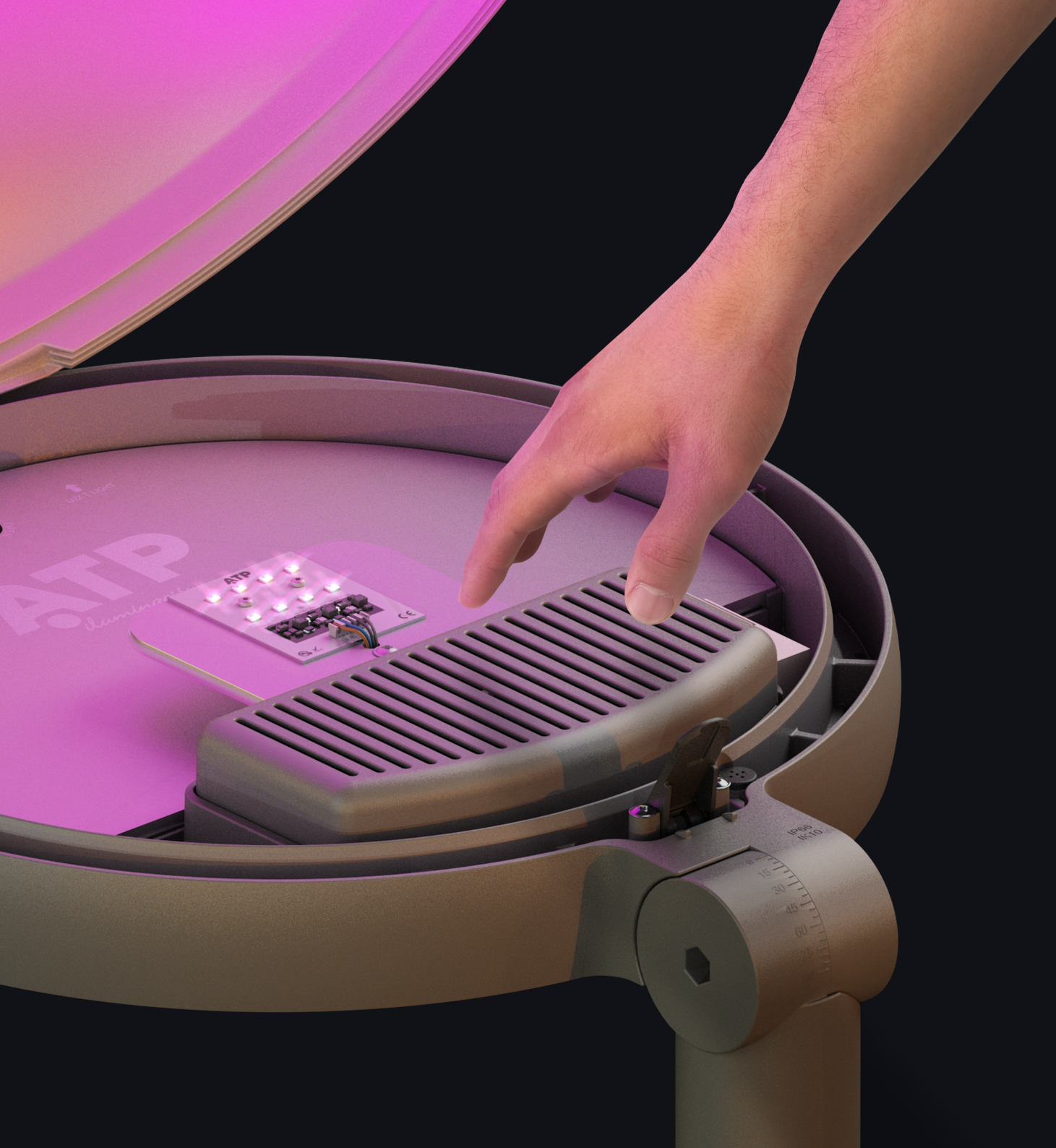




# UNPARALLELED DURABILITY

Thanks to its materials and design, this luminaire is resistant to the harshest environments. It is immune to corrosion and surges, vandal-proof, and fully hermetic. It requires no maintenance and comes with a 10-year warranty, even in extreme humidity, temperature, and salinity conditions, such as those found in coastal areas.





## **CLASE II: DOUBLE INSULATION**

Class II, achieved by a double insulation system, eliminates electrical risk when handling the luminaire and prevents damage to electronic components caused by atmospheric surges that could enter through the ground.





## **IK10+: FAR BEYOND VANDAL-PROOF**

These luminaires withstand impact tests of over 50 joules, which is more than twice the maximum degree of mechanical resistance, IK10, certified by the IEC 62262 international standard (20 joules). This makes them ideal for low-rise poles typically used for urban lighting.





## **IP66+: FULLY HERMETIC**

A one-piece body and a continuous sealing gasket ensure the tightness of the luminaire, even in the most extreme weather. This seal is not limited to the optical components, as is usual in this sector, but extends to the entire enclosure, which protects every internal element against liquid and solid particle penetration.



# LAMINAR HEATSINK®

This internationally patented device maximizes the useful life of LED luminaires. It is manufactured from a special alloy with a high heat transfer capacity that allows an unprecedented dissipation.



LED temperature

**-21 %**



Service life

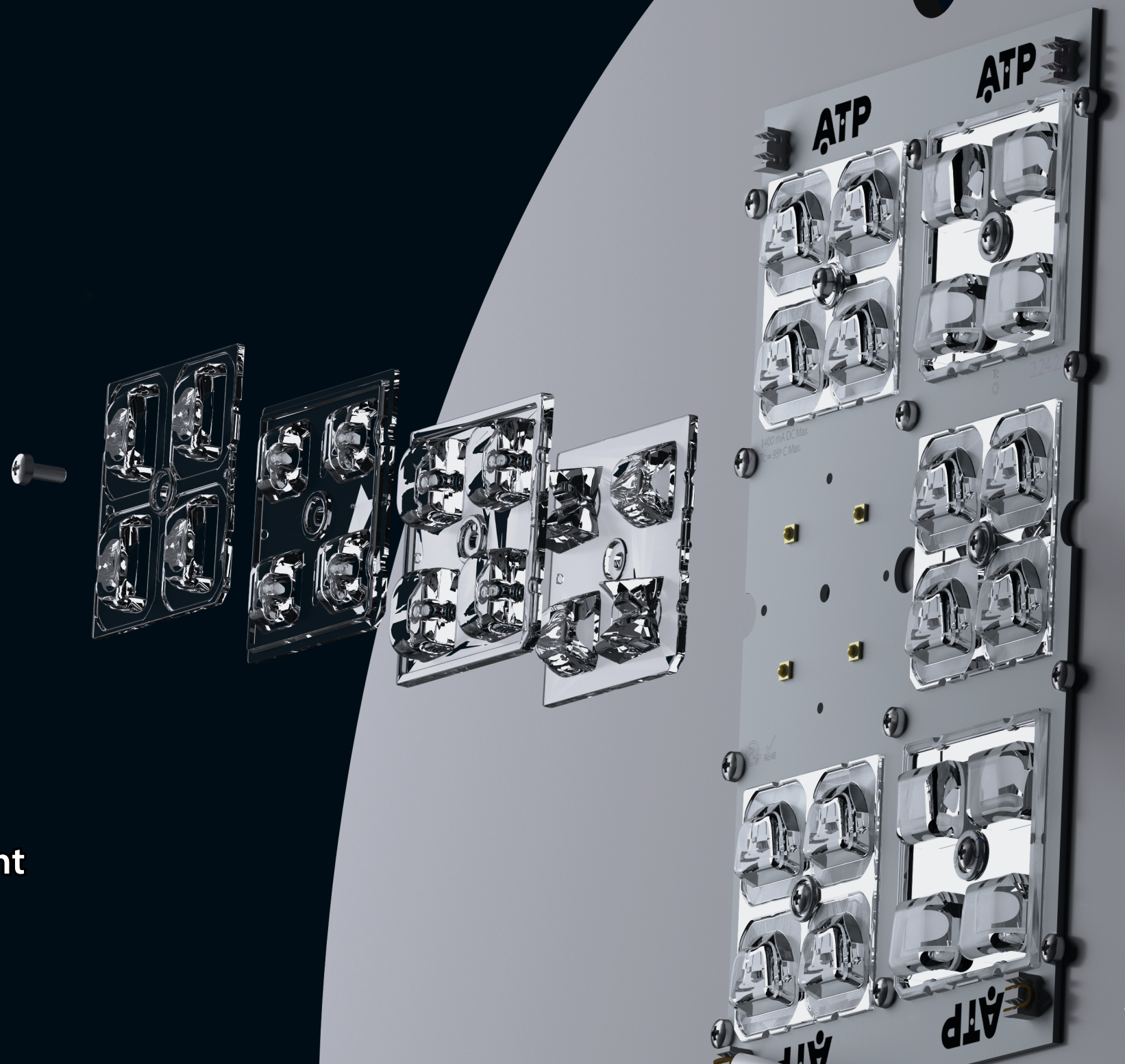
**+27 %**





# CUSTOMIZABLE OPTICS

The lenses are distributed in independent modules with different optical designs that can be combined in multiple ways to obtain the light distribution that best suits each project.





## EASILY INTERCHANGEABLE

The internal design of the luminaire is devised to allow a quick and easy replacement of the Laminar Heatsink® just by disconnecting a wire. This feature is especially useful when a change in the color temperature or distribution of the luminaire is needed.





## EMBEDDED ZHAGA/NEMA CONNECTOR

Due to its thoughtful design and polymeric materials, this luminaire incorporates the Zhaga/NEMA connector within the enclosure. This feature is vital for ornamental luminaires, where design is of utmost importance, enabling the inclusion of remote management nodes without altering the product's appearance.





## **COMFORT DIFFUSER®**

This diffuser has been created from the T5 thermopolymer and is specifically designed to mitigate LED glare without reducing the exceptional performance of this technology or affecting photometry. It ensures visual comfort and offers a more uniform and pleasant light.





# HI-TECH MATERIALS FOR VISUAL COMFORT

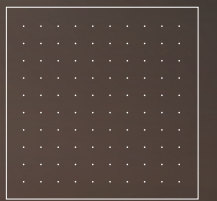
Based on exhaustive research that takes into account various phenomena of light physics, and observing the inversely proportional relation between surface and light intensity, we have managed to isolate the aspects that should be modified to obtain maximum comfort while maintaining efficacy.

Transparent diffuser

Comfort Diffuser®



The larger the luminous area, the less the glare.



The Comfort Diffuser® has 490 % more luminous area.



A photograph of a modern, multi-story building with a curved facade and large glass windows at night. The building is illuminated with warm, yellow light, and the sky is a deep blue. In the foreground, there is a landscaped area with tall grass and a paved path. A street lamp is visible on the left side of the path.

## **ENVIRONMENTALLY CARING WARM COLOR TEMPERATURE**

This luminaire can be supplied in warm and ultra-warm color temperatures (CCT). ATP recommends ultra-warm 1800 K for urban exterior lighting projects. This CCT combines coziness with a high CRI (>70) and a spectral radiant flux below 440 nm of only 0.31 %, which helps mitigate light pollution and protect the environment.



# COLOR TEMPERATURES FOR EVERY NEED



PC Amber



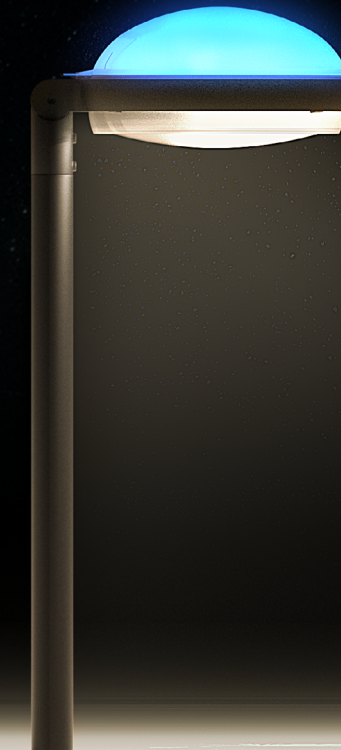
1800 K



2200 K



2700 K



3000 K