



ATP

E SERIES
FLOODLIGHT
+
KITLED®



red**dot** winner 2021
lighting design

E Series floodlight - S model



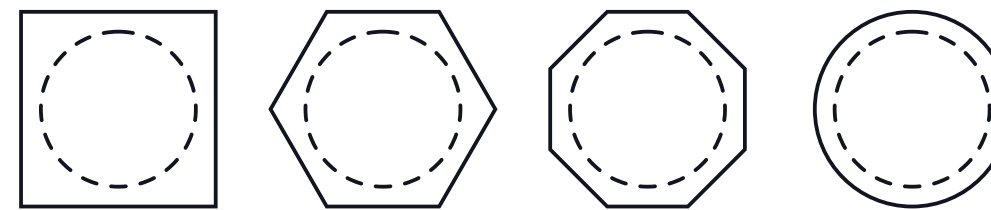
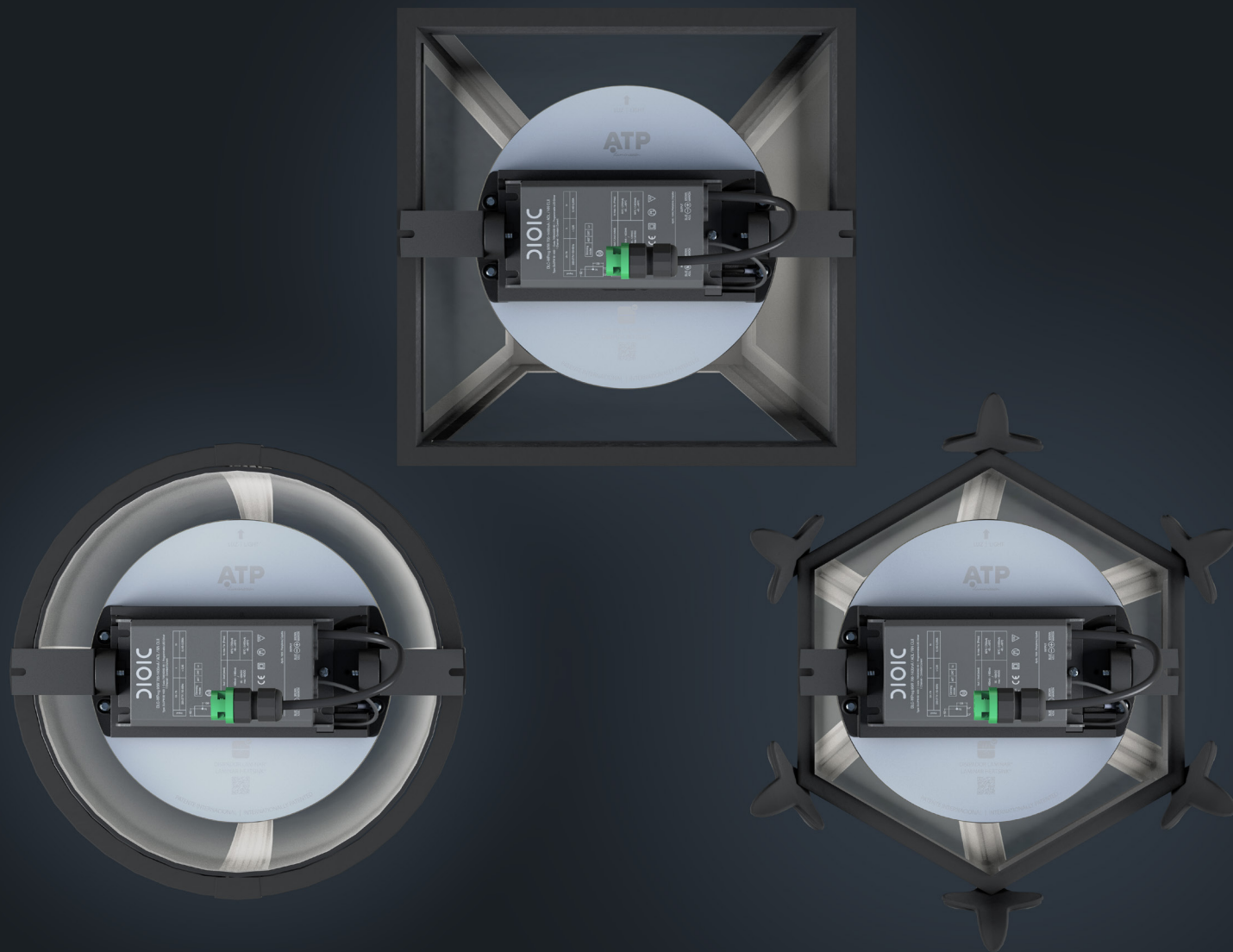
ONE CORE, TWO DIFFERENT PRODUCTS

This device is designed to obtain two different products from the same core: the versatile and compact E Series floodlight, equipped with an adjustable handle, and the KitLED® upgrade kit, in which the handle is replaced by fixing brackets that can be adapted to any luminaire from any manufacturer.



AVAILABLE IN TWO SIZES (S & M)

The E Series floodlight and the KitLED® are available in two convenient sizes to suit the needs of any luminaire or project. The S model has a diameter of 200 mm, 95 mm width and 210 mm height, while the M model has a diameter of 285 mm, 105 mm width and 305 mm height.



ADAPTABLE TO ANY LUMINAIRE

The KitLED® has a fully adjustable fastening system to easily and securely attach it to any luminaire from any manufacturer. It is ideal for upgrading historic streetlights to LED technology, avoiding the need to replace them entirely with new models.

SAFE AND DURABLE



This device has ATP's unique characteristics, including total electrical safety, mechanical resistance and full tightness. It does not need maintenance and has a comprehensive 10-year warranty.

Class II: double insulation

Class II, achieved by installing a polymeric tray to support the drivers, eliminates electrical risk and prevents damage to electronic components caused by atmospheric surges that could enter through the ground.

IP66+: totally hermetic

Precise sealing and rigorous quality control ensure the tightness of the device, even in the most extreme weather. This high degree of IP protects every electronic component and internal element against liquid and solid particle penetration.

IK10+: far beyond vandal-proof

These luminaires withstand impact tests beyond 50 joules, which is more than twice the maximum degree of mechanical resistance, IK10, certified by the IEC 62262 international standard (20 joules).


UNIQUE TECHNOLOGY




The E Series floodlight and the KitLED® feature the latest innovations and international patents developed by ATP in order to perfect LED technology.

Laminar Heatsink®

This device offers exceptional heat transfer and maximizes the useful life of LED luminaires. It is manufactured in a special alloy for naval purposes, anodized, much more resistant than the die cast aluminum normally used in the sector. Withstands the most extreme weather.


LED temperature
-21 %

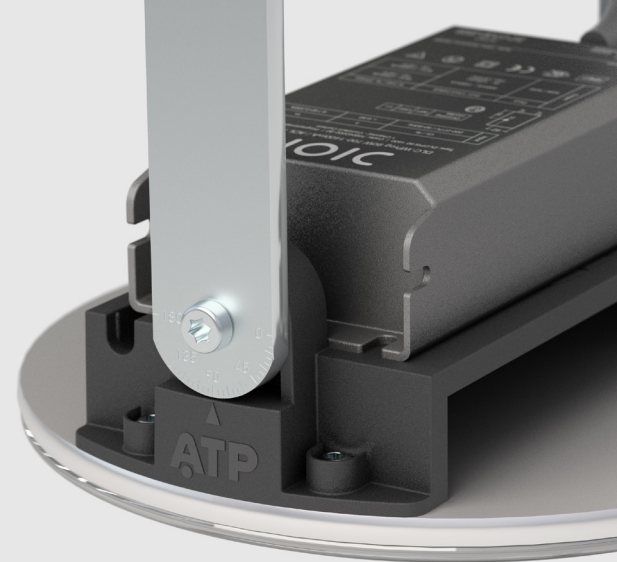

Useful life
+27 %

Comfort Diffuser®

Specially designed to mitigate LED glare without reducing the exceptional performance of this technology or affecting photometry. This diffuser has been carefully developed to ensure visual comfort and to offer a more uniform and pleasant light.

Adjustable handle

Handle with a gear-type adjustable adaptor that facilitates the installation and orientation of the luminaire. Enables the floodlight to be tilted in 2.5° intervals or to be positioned horizontally or vertically.



Color temperature

This device can be supplied in PC Amber, 2200 K, 2700 K, 3000 K and 4000 K. ATP recommends the ultra-warm color temperature of 2200 K for most street lighting applications. This CCT combines a high CRI (>70) with a spectral radiant flux below 440 nm of only 1.3 %, which helps mitigate light pollution.



Customizable optics

The lenses are distributed in independent modules with different optical designs that can be combined in multiple ways to obtain the light distribution that best suits each project.



IP68 plug & play connector

The IP68 plug & play tubular connector, sealed against water and dust, ensures the device's quick and safe installation. Just plug it into the power supply, and the luminaire will be ready for operation. Electrocutation-proof.