

# Metrópolis EBLC



## Standard colours

Other colours available on demand.



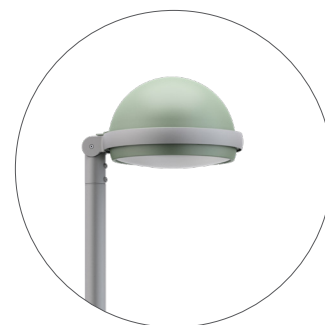
**N** Black



**GC** Light grey



**GO** Dark grey



**V** Green

## Technical specifications

### Coupling

Ø 50 / 60 mm.

### LED voltage

220-240 V 50-60 Hz

### Recommended maximum height

12 m.

### Weight without gear

6,0 Kg.

### Photocell

On request.

### Protection grades



Totally hermetic



More than vandal-proof

### Exclusive technology



Laminar Heatsink®

### Electrical insulation



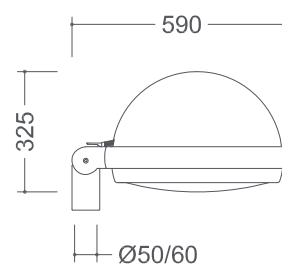
Class II

### Warranty



Integral Warranty

### Dimensions



## Certificates



NOM



CE



CB Certificate



ENEC



ISSOP



UKCA

## Available optics



100W Max.



100W Max.



100W Max.



100W Max.



100W Max.



100W Máx.

## Colour temperatures



PC AMBER



1800 K



2200 K



2700 K



3000 K



4000 K



Designed and manufactured integrally by ATP in Europe

ATP LIGHTING INTERNATIONAL, S.A.  
Chlupfgasse 2 · 8303 Bassersdorf · Switzerland  
info@atplighting.com · www.atplighting.com

## Technical Specifications

### Drivers

LED luminaires come with constant current, programmable electronic drivers, and the possibility of connecting a remote management system for lighting control. The supply voltage is 220-240 V 50-60 Hz, and on-demand 120-277 V 50-60 Hz.

Features of standard electronic drivers:

- Protection against 6 kV/3 kA surges in differential mode (between line and neutral).
- Thermal protection.
- All equipment is programmable and incorporates the following functionalities:
  - Dynamic regulation based on the duration of the night and the programmed hourly profile.
  - 1-10 V, DALI, or D4i interface for connecting sensors or remote lighting management systems.
  - Constant lumen output (CLO).
  - Electronic equipment certified ENEC.

### Connectivity

Luminaires available with Zhaga connection system for control nodes.

### Light source

Module with high-power LEDs.

Standard available color temperatures: 1800 | 2200 | 2700 | 3000 | 4000 K and PC Amber.

Color Rendering Index (CRI) >70 (except PC Amber).

LED module lumen maintenance: L95B10 >100,000 h at 25°C ambient temperature. Over five (5) standard optics available.

### Electrical wiring

Certified by CENELEC with HAR mark.

IP68 tubular connector.

### Corrosion resistance

Materials completely immune to corrosion. Stainless steel screws.

### Materials

The reinforced technical engineering polymer S7 is immune to corrosion and adverse elements, as well as anti-electrocution. This material undergoes 3000 hours in a UV ray chamber (S/UNE 53104/86) without showing any color alteration.

The high-impact tropicalized transparent thermopolymer T5 is manufactured with chemical polishing technology to achieve exceptional transparency and transmittance. It also presents a collision resistance 200 times higher than glass and, like S7, is capable of passing impact tests exceeding 50 joules – more than double the requirements of the IK EN 62262 standard. This material undergoes 3000 hours in a UV ray chamber (S/UNE 53104/86) without showing any color alteration.

### Maintenance

Materials that do not require maintenance.

### Resistance to impact (vandal-proof)

The materials used, as well as the construction characteristics, give the ATP luminaires an impact resistance that greatly exceeds the maximum degree, IK10, established by the UNE-EN 62262 standard.

### Isolation

Class II.

### Protection rating

Tightness: IP66 + IPX9 (15°C).

Impact: IK10.

### Certifications and approvals

CE: European Conformity Mark.

N: Spanish Association for Standardization and Certification.

ENEC: European Norms Electrical Certification.

ISSOP: ISSOP seal distinguishing companies manufacturing products without planned obsolescence.

IECEE: IEC System of Conformity Assessment Schemes for Electrotechnical Equipment and Components.

CB (IECEE) Certificate Number: ES1717